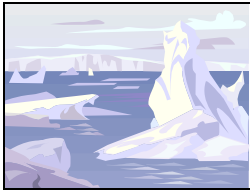


CHANGES FOR 2011/2012 – GRANTEES AND SUBCONTRACTORS



Please take a moment to review changes for the upcoming season, and contact the Deployment Specialists Group with concerns or questions.

1-800-688-8606 (prompt 2) or 303-790-8606 (prompt 2) or deploy@usap.gov.

And be sure to check for late-breaking changes before you deploy:
<http://www.usap.gov/usapgov/travelAndDeployment/ContentHandler.cfm?id=2333>.

Winterover Pregnancy Screening

The USAP Federal Medical Review Panel (comprised of physicians from the USAP, NASA, Federal Occupational Health Administration, the Air Force, and independent subject matter experts) recommended that tests for pregnancy, which is a “Not Physically Qualified” condition for Antarctic deployment, be administered 1 to 2 weeks before station closing to women of child bearing age. The NSF accepted the Panel’s recommendation and all wintering females of child-bearing age will be screened.

Christchurch Hotels

The number of hotel rooms in Christchurch is limited due to earthquake damage. RPSC will assign hotel rooms based on availability, regardless of preference. Also, the hotels will not have many AC adapters available; the CDC has a limited supply to lend but it is wise to bring your own.

Mutilated Passports

Damaged passports are not accepted for international travel. The U.S. Department of State defines damage as “water damage, a significant tear, unofficial markings on the data page, missing visa pages (torn out), a hole punch and other injuries.” The State Department advises against adding unofficial stamps to your passport.

A reminder also that there should be at least four blank pages remaining in your passport before you deploy.

Cash for Chilean Entrance Fee

If you are traveling through Chile on a first-time passport, you will pay a Chilean Entrance fee in U.S. dollars. Customs officials have been known to refuse cash if it is not in good condition. You can use a debit or credit card but if are going to pay with cash, please plan on using newer bills over well-used dollars.

Redeployment – Ticketing Deadline

ALL REDEPLOYMENT TICKETS MUST BE PURCHASED BY MARCH 16, 2012. You may continue leisure travel but your return flight to the U.S. must be booked by then.

The new contractor is under no obligation to assist after this date. If you do not coordinate your redeployment with RPSC by March 16, 2012, RPSC will book a random flight to the U.S. and you will be responsible for all change fees, penalties and fare differences.

Natural Disaster Management

Due to natural disasters in Chile and New Zealand, expect a stronger crisis management presence this season. This may take the form of post-season check-ins, centralized social networking sites, e-mail/ phone/text trees, etc. We need to account for your safety from the time you leave your home to deploy until your safe return, and will share details as they become available.

Emergency Contact Wallet Card

An Emergency Contact card will be included with your travel documents. Please place it in your wallet in case there is an emergency during your travels.

Airlines

Airline operating policies continue to present challenges to the Program. We aim to accommodate everyone’s travel preferences, but please be flexible.